



VISTA Versa-Tile Instructions

IMPORTANT NOTE

VISTA Versa-Tiles feature a strong instant-grab adhesive backing. Once applied, tiles cannot be repositioned and if removed may cause damage to paint/plasterboard or other surfaces.

VISTA Versa-Tiles should not be applied to concrete-block or brick walls, unless fully rendered - for this application we recommend the use of VISTA Versa-Tiles in conjunction with a full contact adhesive.

Where concrete block or brick walls have been fully rendered, VISTA Versa-Tiles can be used following the instructions supplied overleaf.

PLEASE READ ALL INSTRUCTIONS BEFORE BEGINNING INSTALLATION

These guidelines are given in good faith to help prevent installation problems caused by the most common errors. VISTA accepts no responsibility for installation actions taken or not taken. There are many aspects of installation not covered in these instructions that VISTA assumes are general building knowledge to an experienced installer. These installation guidelines are strictly recommendations and are not intended to be a step-by-step, foolproof installation checklist. If you have any questions about installation techniques for your particular project, please contact your distributor of VISTA Versa-Tiles.

TOOLS REQUIRED

Snap-off knife and blades, straight edge, hand roller or domestic rolling pin, cutting board or flat cutting surface.

STORAGE

Tiles must be laid flat and stored indoors on a solid, flat, dry surface. Do not stack on a concrete floor or any other surface that emits moisture. Optimum storage conditions are 18°C and 45%-55% relative humidity

INSPECTION

Inspect tiles for any defects immediately. Do not install tiles of unacceptable quality. VISTA will not be responsible for installation or removal costs of unacceptable tiles. Colours may vary due to dye batches.

BEFORE INSTALLING / PRE-CONDITIONING

Prior to installing VISTA Versa-Tiles, remove the packaging and allow the tiles to acclimatise to the room temperature and humidity for approximately 1 - 2 hours. Ideally, both the room temperature and humidity during acclimatisation and installation should be the same as the final operating conditions.

INSTALLATION CONDITIONS

VISTA Versa-Tiles should only be installed on prepared surfaces. Minimum installation temperature is 18°C and maximum relative humidity 75%.

UNEVEN SURFACES

Installation over uneven surfaces will result in less than complete adhesion to the wall substrate, therefore creating the potential for air pockets to form behind the tile. High and low spots should be levelled to provide an even wall surface.

SURFACE PREPARATION

GENERAL

Prior to installation ensure all surfaces are flat, dry, sound and are free from dust or other contaminants. All surfaces should be washed with a detergent that will not leave a residue and should be allowed to fully dry. In particular, older painted surfaces or wallpaper may have a film of grease or other contamination that may need to be cleaned off.

In general, most surfaces such as softboard should be sealed.

Where a sealer is to be used, gloss surfaces which are not porous, such as high gloss paint and some wallpapers, should be lightly scuffed first.

Some suitable sealers/primers are: Autex FastFix, Roberts 370, Polymer 6000. These products must be allowed to fully cure prior to installing the tiles. For more advice on specific applications please contact your local distributor.

We recommend that one tile be installed first to ascertain the suitability of the surface and preparation.

CONCRETE/RENDERED CONCRETE BLOCK

High and low spots should be levelled to provide an even wall surface. Concrete block walls must be fully rendered.

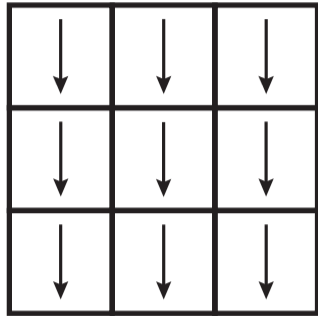
New concrete walls must have had sufficient time to cure - generally 28 days. Walls must be free of hydrostatic pressure, moisture and excessive alkalinity. Efflorescence (white powder) on the surface must be removed. In any of these instances a suitable sealer/primer must be first applied and allowed to dry.

All dust must be removed by wiping down with a wet cloth and allowed to thoroughly dry. Concrete walls may be subject to condensation or low surface temperatures and must be dried/warmed prior to installation.

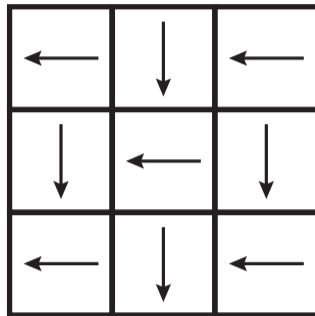
INSTALLATION

Do not remove the release-film on the tile until immediately prior to installation. Once the film has been removed the tile must not be exposed to any moisture or dust.

All in one direction



Checkerboard style



VISTA Versa-Tiles have a pile direction indicated by the arrows on the back of the tiles. They must be laid with all the arrows in the same direction for uniformity or, as per the diagram, in a checkerboard style.

We recommend installing the tiles with the arrows pointing down. Where different colours are used together, all tiles should be laid in the same direction.

Carefully plan out your installation and ensure you have the required number of tiles for the job.

Mark out in pencil on the wall the area for your tiles. An easy method is to snap chalk-lines for the perimeter and centre-point, ensuring lines are level and at right angles. It's a good idea to lay the tiles out on the floor to check the pattern. Adjust the centre-lines to ensure very small gaps at edges do not occur.

Start laying the tiles from the centre of the area. Remove the release-film and hold the tile at an angle to the wall; apply one edge to the line and then place the tile onto the wall (fig. 1). Apply firm pressure from

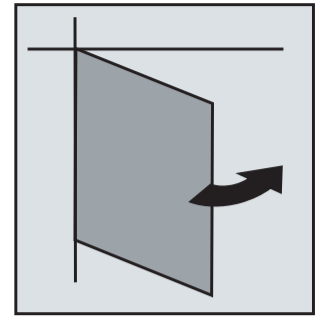


fig 1

the centre of the tile out to the edges to ensure good adhesion. A roller must be used to firmly push the whole surface of the tile to the wall.

Subsequent tiles should be laid up against the previous tile, holding the tile at an angle to the wall and then placing down. (fig 2)

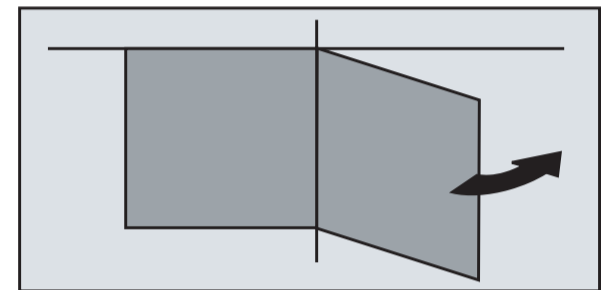


fig 2

To cut tiles in along walls, place the tile to be cut under the next tile closest to the wall prior to adhesion and use that tile as your cutting guide. VISTA Versa-Tiles can be cut with a snap-blade knife and straight edge.

Re-roll all tiles when the job is complete to ensure good adhesion.